

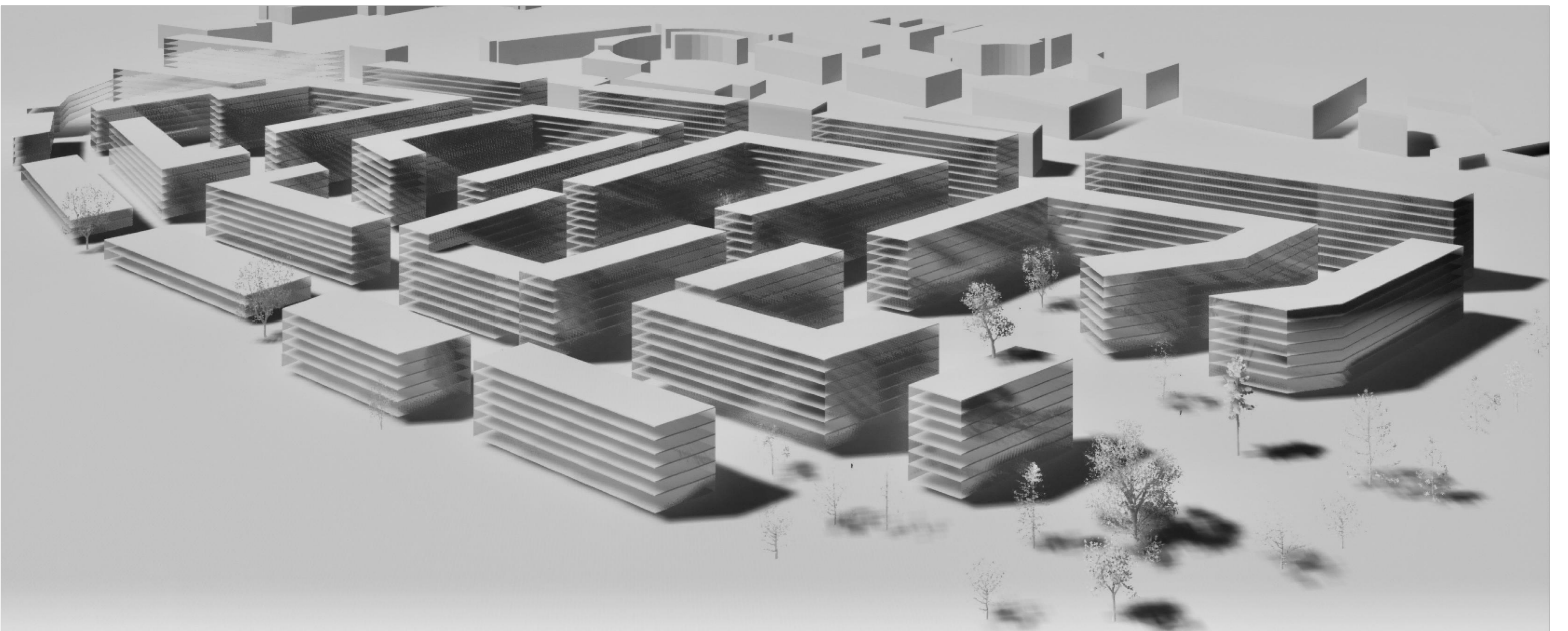
ordenación urbana logroño  
ejercicio integrado 2  
urbanismo III  
María Meraña

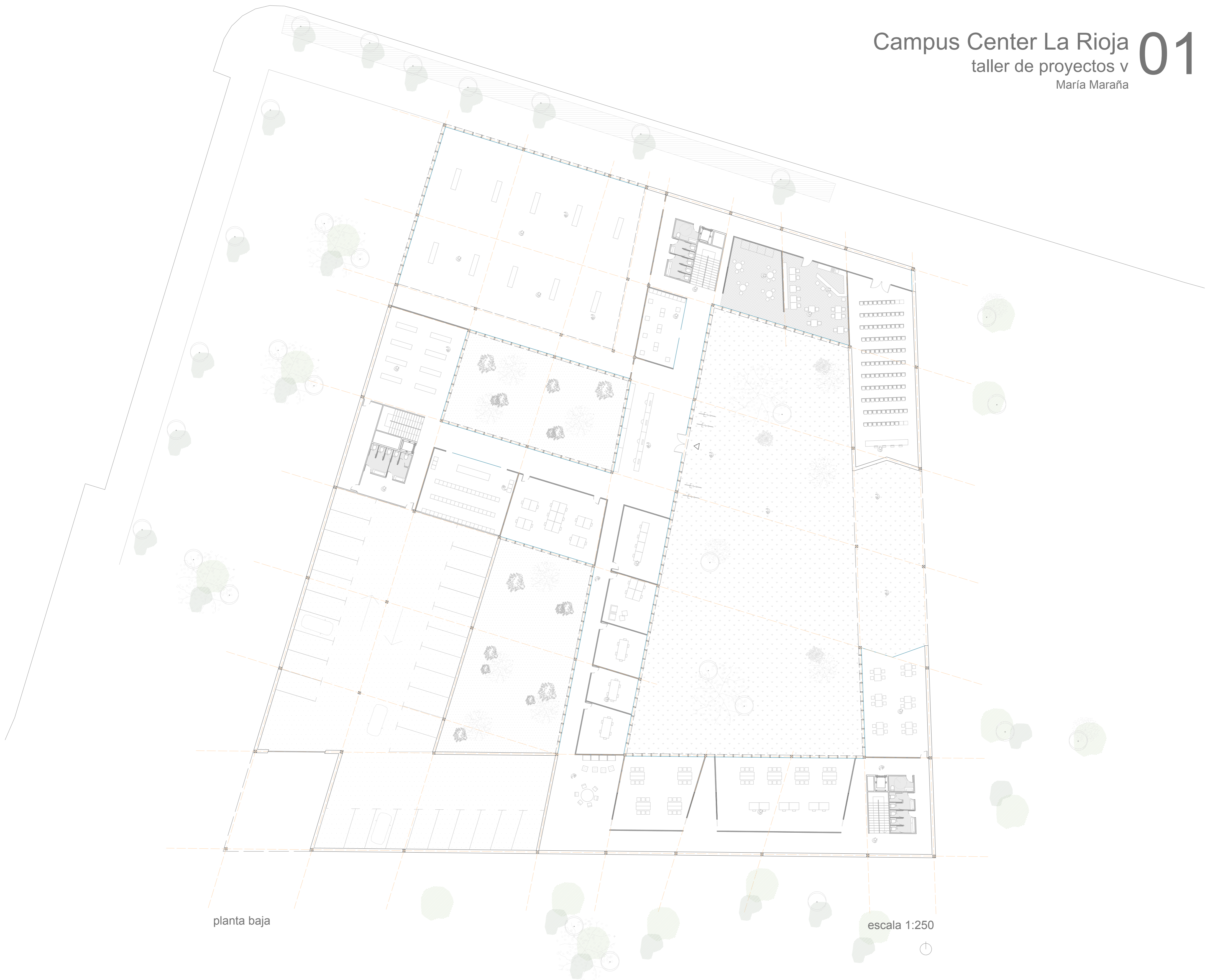
escala 1:15000



zona verde  
zona comercial  
zona dotacional  
escala 1:2000

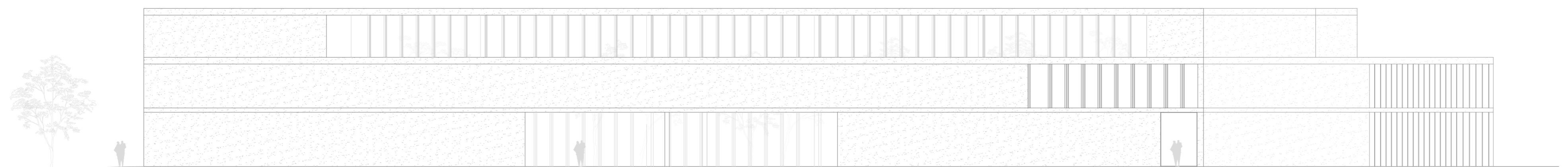
escala 1:1250





planta baja

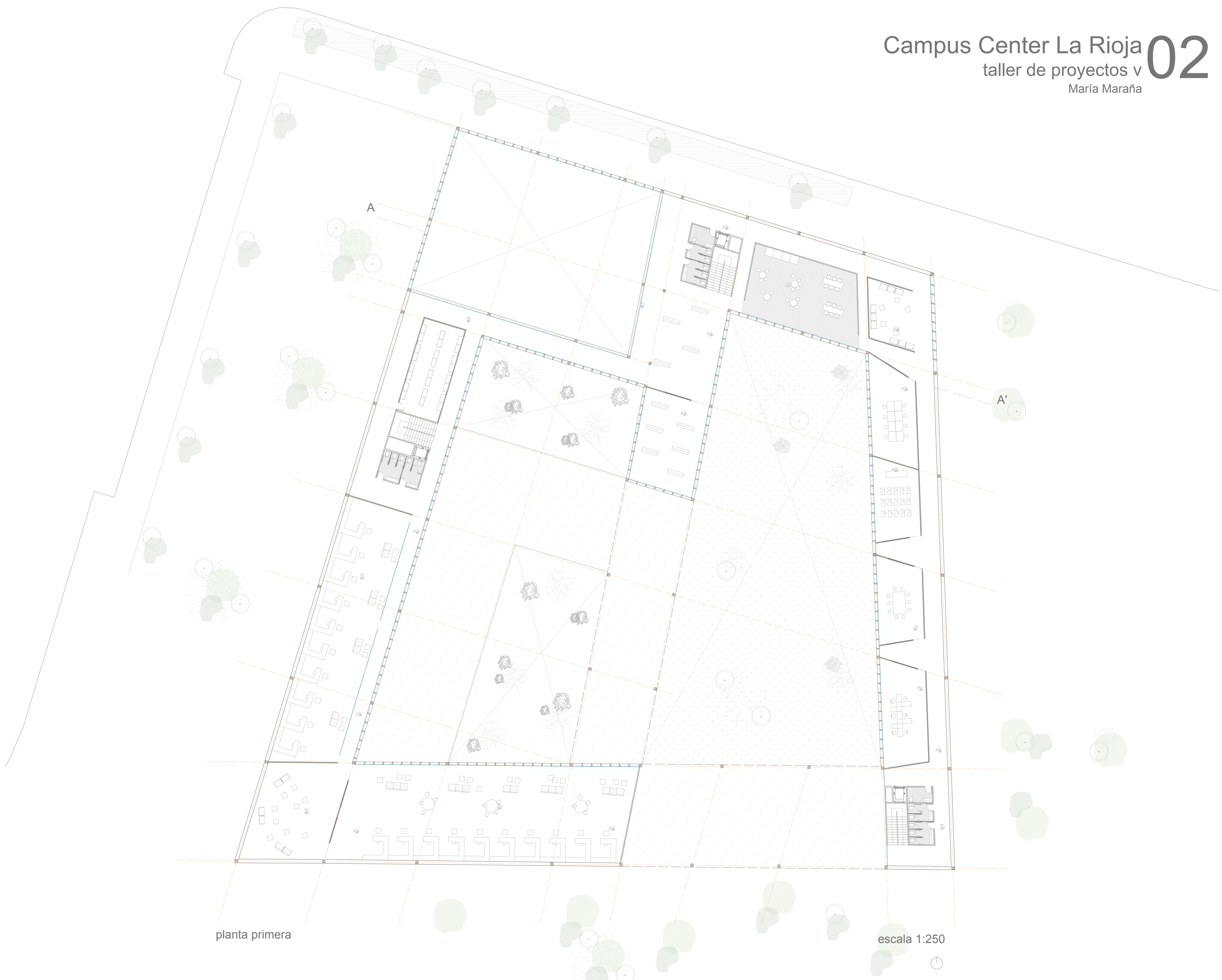
escala 1:250



alzado este

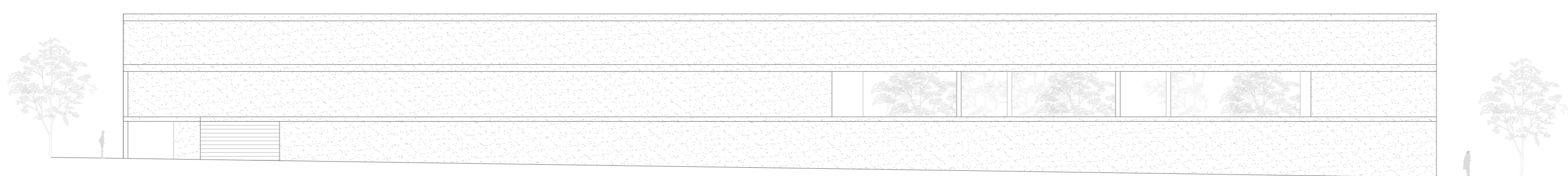
escala 1:250





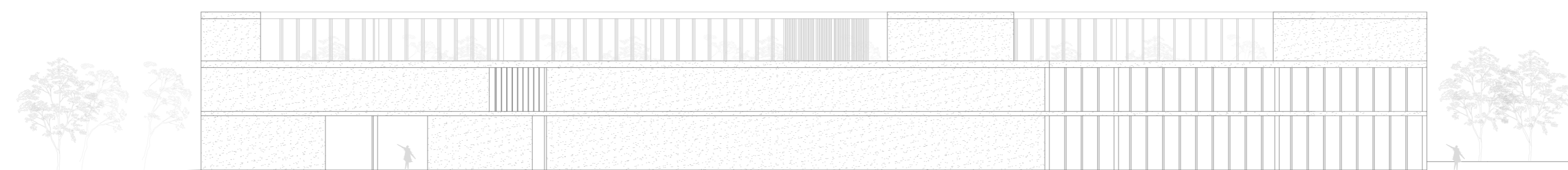
planta primera

escala 1:250



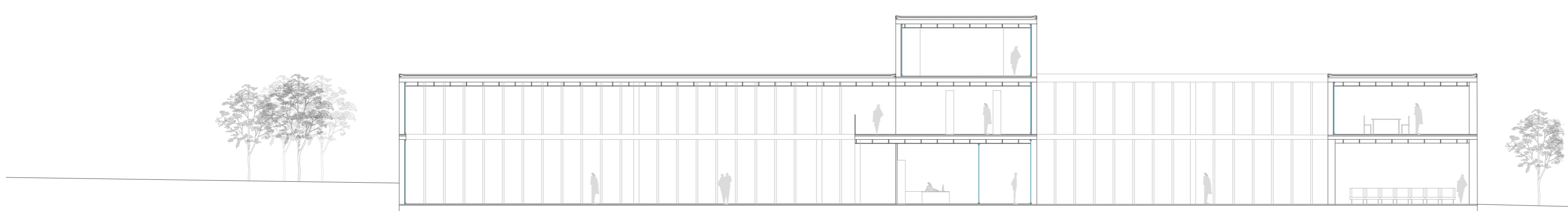
alzado sur

escala 1:250



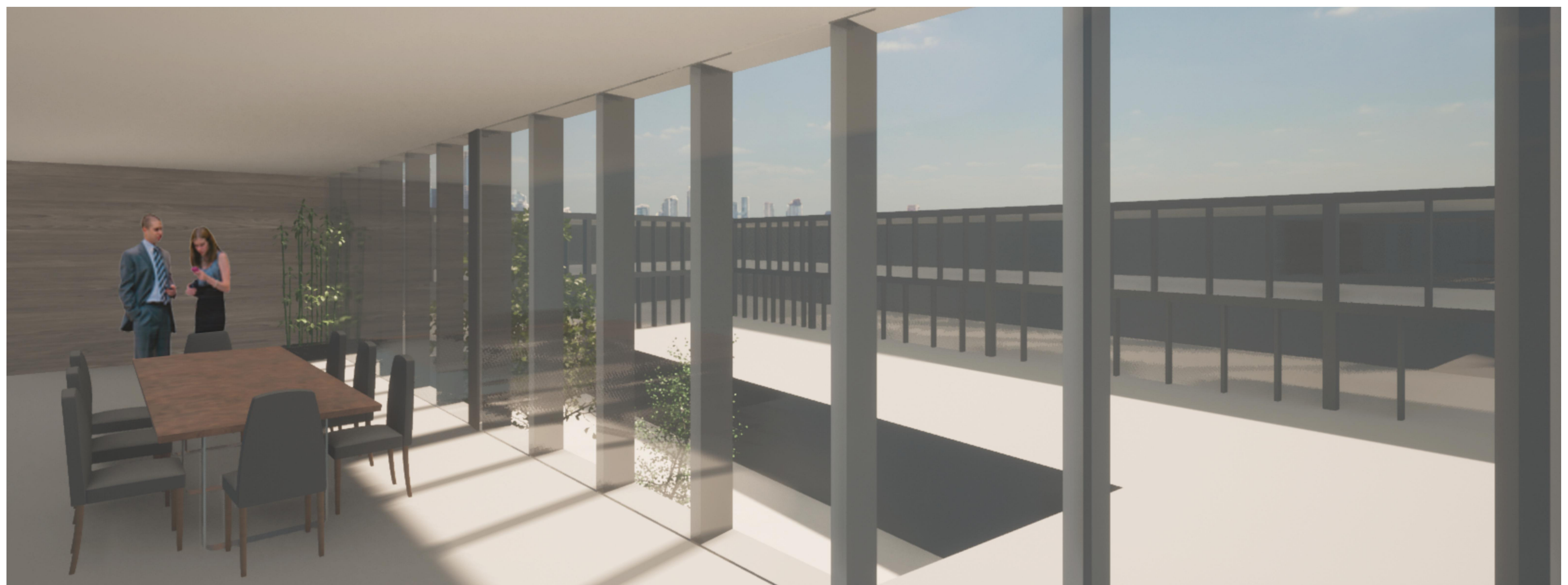
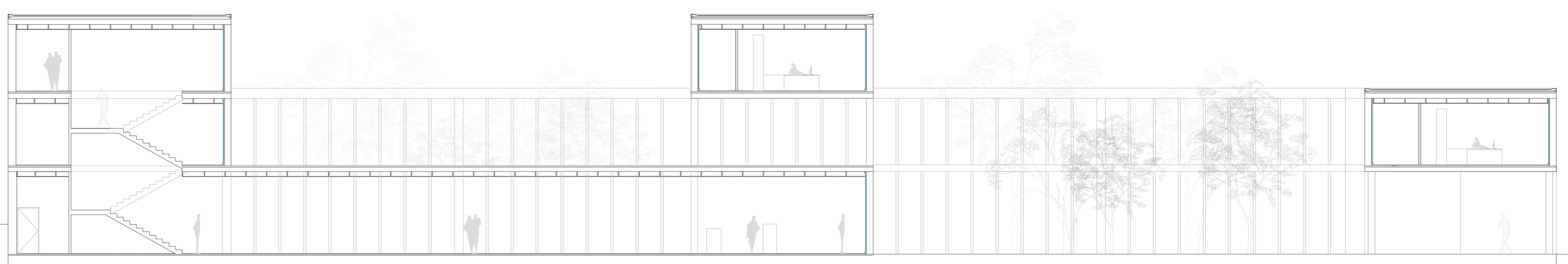
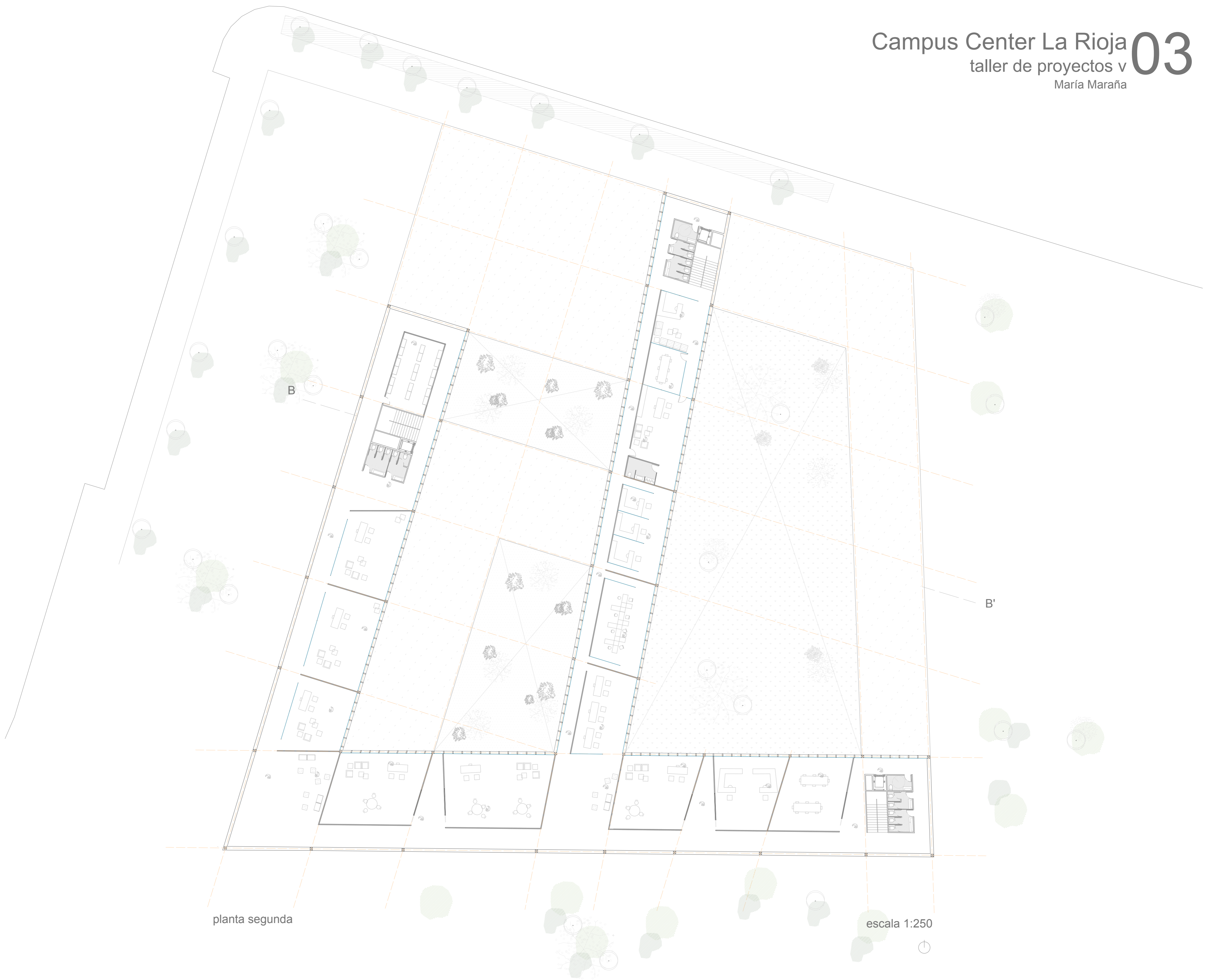
alzado norte

escala 1:250



sección AA'

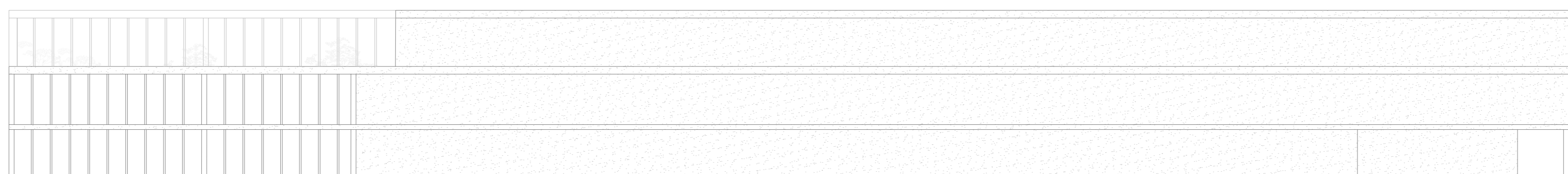
escala 1:200





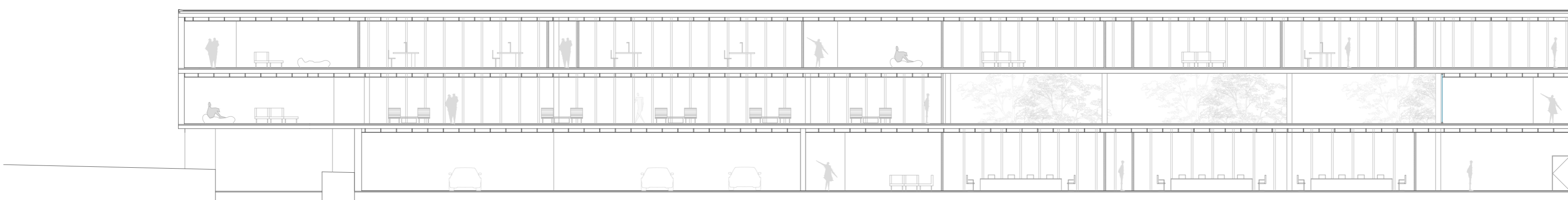
planta baja

escala 1:500



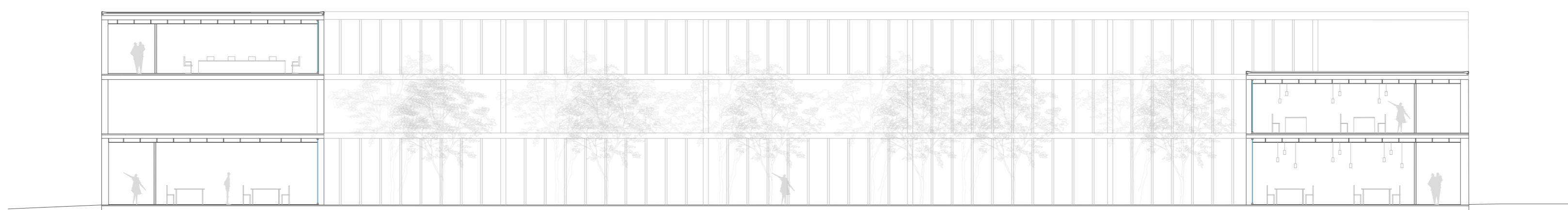
alzado oeste

escala 1:200



sección CC'

escala 1:200



sección DD'

escala 1:200

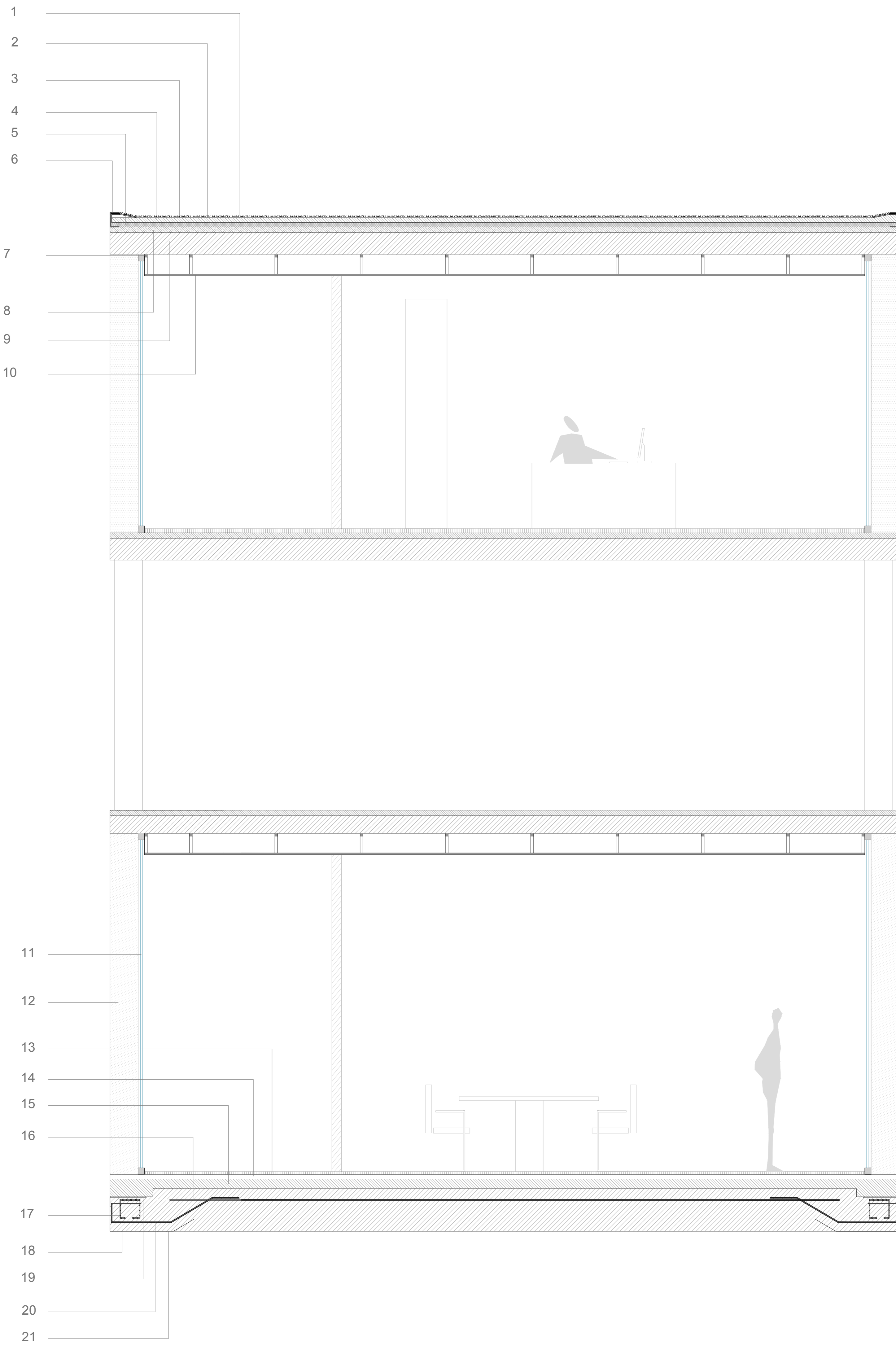


# Campus Center La Rioja

## taller de proyectos v05

María Maraña

- 1 canto rodado
- 2 carpeta e:2cm
- 3 membrana geotextil
- 4 contrapiso pendiente 1,5%
- 5 aislante térmico. lana de vidrio e:7cm
- 6 perfil C 220 PENTAKA
- 7 estructura cielorraso 50x25
- 8 contrapiso e: 6cm
- 9 losa hueca pretensada VIBROCOM LP24. e:24cm
- 10 cielorraso tablas de madera KIRI 41/2 x 3/4
- 11 vidrio
- 12 poste hormigón (celosía)
- 13 piso cerámico 40x40cm. e:3cm
- 14 carpeta de nivelación
- 15 contrapiso e:7cm
- 16 malla cruzada repartición superior. Hierros 8Ø c/15cm
- 17 hierros de sujeción
- 18 base hormigón H21
- 19 platabanda 35x35cm e:1/4
- 20 malla cruzada inferior. Hierros 16Ø c/20cm
- 21 film de polietileno 300mc



escala 1:25  
sección  
constructiva

